

**AN EFFECTIVE AID IN THE PREVENTION AND TREATMENT OF PRESSURE ULCERS**

**REORDER CODES**

**Repose® Care-Sit & Care-Sit Cover 400mm**

1x Care-Sit 400mm Inflatable Inner Section & 1x Care-Sit 400mm Cover & Pump

**Order Code: 6350001**

**Repose® Care-Sit Cover 400mm**

1x Care-Sit 400mm Cover

**Order Code: 6350000**

**Repose® Care-Sit & Care-Sit Cover 450mm**

1x Care-Sit 450mm Inflatable Inner Section & 1x Care-Sit 450mm Cover & Pump

**Order Code: 6351001**

**Repose® Care-Sit Cover 450mm**

1x Care-Sit 450mm Cover

**Order Code: 6351000**

**CLEANING INSTRUCTIONS**

**1 REPOSE® CARE-SIT INFLATABLE INNER SECTION**



REPOSE® CAN BE CLEANED WITH SOAP OR DETERGENT AND WATER AND CAN BE DISINFECTED IN ACCORDANCE WITH LOCAL INFECTION CONTROL POLICY. ALLOW TO DRY BEFORE USE OR STORAGE.

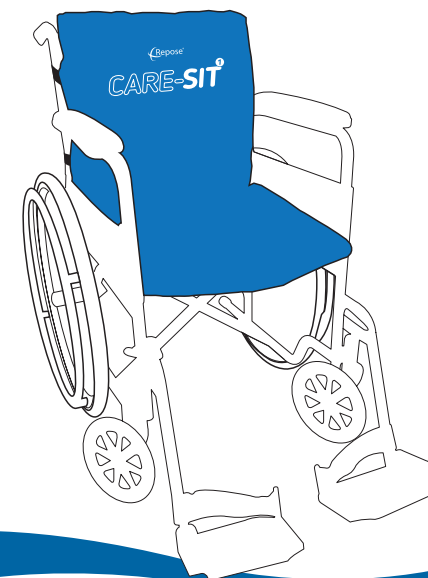
**2 REPOSE® CARE-SIT COVER**



REMOVE INFLATABLE SECTION PRIOR TO WASHING. OPEN ZIP AT SIDE AND TURN COVER INSIDE OUT. AVOID USE OF BLEACH AND STAIN REMOVERS. ALLOW TO DRY.

FOR FURTHER INFORMATION VISIT [www.reposedirect.com](http://www.reposedirect.com)

CE REPOSE® WORLD WIDE PATENT PENDING  
FLAME RETARDANT - COMPLIES WITH BS7175 AND BS7177 IGNITABILITY SOURCE CRIB 5



**Frontier Therapeutics Limited**  
Newbridge Road Industrial Estate  
Blackwood, South Wales NP12 2YN

**Tel:** +44 (0)1495 235800

**Fax:** +44 (0)1495 235808

**Email:** [info@frontiermedical.eu](mailto:info@frontiermedical.eu)

[www.frontiermedical.eu](http://www.frontiermedical.eu)

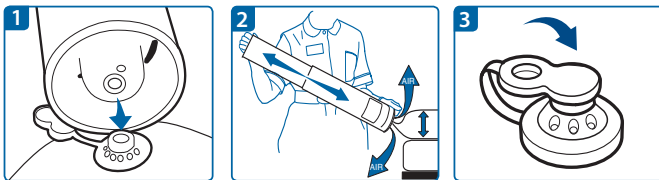
**REPOSE® CARE-SIT  
USER INSTRUCTIONS**

## QUICK START GUIDE

- 1 Inflate Inflatable Inner Section
- 2 Insert Inflatable Inner Section into Care-Sit Cover
- 3 Secure Repose® Care-Sit to Wheelchair

## TO INFLATE

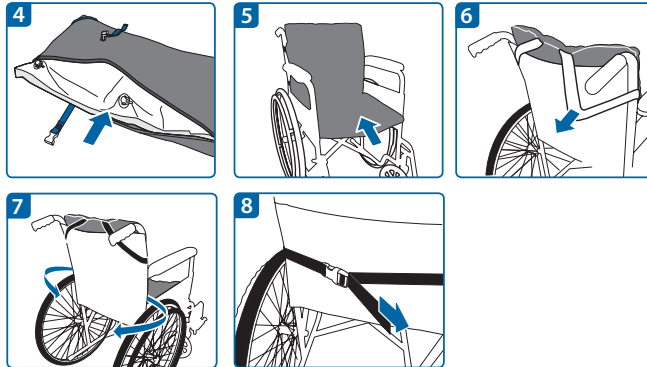
- Remove the Repose® Care-Sit inflatable inner section from the tube, refit the two tubes together to form a pump.
- Connect the valve on the pump to the valves on the device - Push to fit (See fig. 1).
- Inflate each Repose® Care-Sit inflatable inner section until you hear air exhausting from the pump valve. Discontinue pumping and wait until you no longer hear air escaping (See fig. 2).
- Disconnect from pump. Cover the valves on the device using the solid end of the valve cap (See fig. 3).
- Turn over with valves underside and away from user.



## FITTING INSTRUCTIONS

- Lay Repose® Care-Sit cover out with fixing straps beneath.
- Place the Repose® Care-Sit inflatable inner section lengthways, insert into Repose® Care-Sit cover and lay flat with valves face down. (See fig. 4) Zip the cover closed.
- Ensure that the Repose® Care-Sit is positioned correctly before securing. (See fig. 5)

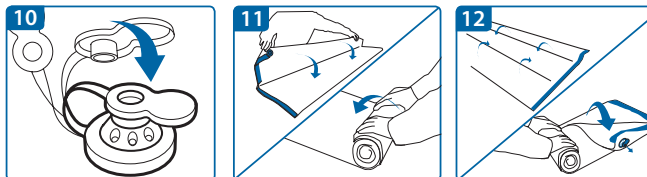
- Loop both of the upper fixing straps over the wheelchair handles. (See fig. 6)
- Loop lower fixing straps around the back of the wheelchair under the arm rests. (See fig. 7)
- Clip the fixing strap into place and adjust until secure. (See fig. 8)



## TO DEFLATE

- Insert the open end of the valve cap into both valves. Air can now escape (See fig. 10).
- Fold and roll up the device starting at the point furthest away from the valve until all air is expelled. (See fig. 11).
- Re-fold, and re-roll as tightly as possible (See fig. 12).
- Replace device into the pump. Refit the two tubes together and rotate outer tube until it clicks closed.

FOR MORE INFORMATION - PLEASE SEE THE REPOSE® CARE-SIT™ INFLATABLE INNER SECTION INSTRUCTIONS, INCLUDED WITHIN THE PUMP.



## LIMITATIONS FOR USE

REPOSE® CARE-SIT COVER IS ONLY TO BE USED WITH REPOSE® CARE-SIT INFLATABLE INNER SECTION.

ONLY TO BE USED WITH WHEELCHAIRS / STATIC CHAIRS NOT TO BE USED AS A SLING OR A FLOTATION DEVICE.

MAXIMUM USER WEIGHT 139KG

## PRECAUTIONS

REPOSE® CARE-SIT CAN BE CLEANED AND REUSED. REPLACE IF PRODUCT IS DAMAGED OR THREADBARE.

CHECK PRODUCT REGULARLY TO ENSURE CORRECT INFLATION LEVEL. IN CASE OF DOUBT, REPEAT PUMPING PROCEDURE WITH THE USER OFF THE PRODUCT.

KEEP AWAY FROM SOURCES OF DIRECT HEAT (INCLUDING CIGARETTES), AND SHARP OBJECTS (ESPECIALLY PETS' CLAWS) THAT MAY CAUSE A PUNCTURE.

POSITION ON THE WHEELCHAIRS / STATIC CHAIRS SHOULD BE CHECKED REGULARLY TO ENSURE THE CORRECT AND SAFE USE.

FOR FURTHER INSTRUCTIONS AND INFORMATION, SEE PUMP.

IF DETERIORATION IN SKIN CONDITION IS NOTED, CLINICAL ADVICE SHOULD BE SOUGHT AND IF SO ADVISED, DISCONTINUE USE OF PRODUCT.

WHEN DEFLATED KEEP AWAY FROM BABIES AND SMALL CHILDREN.

## IMPORTANT NOTICE

ONLY USE REPOSE® CARE-SIT OVERLAY WITH REPOSE® CARE-SIT COVER.

REPOSE® CARE-SIT CAN BE CLEANED AND REUSED.

CHECK PRODUCT REGULARLY TO ENSURE CORRECT INFLATION LEVEL. IN CASE OF DOUBT, REPEAT PUMPING PROCEDURE WITH THE USER OFF THE PRODUCT.

KEEP AWAY FROM SOURCES OF DIRECT HEAT (INCLUDING CIGARETTES), AND SHARP OBJECTS (ESPECIALLY PETS' CLAWS) THAT MAY CAUSE A PUNCTURE.

MAXIMUM USER WEIGHT 139KG.

POSITION ON THE CHAIR SHOULD BE CHECKED REGULARLY TO ENSURE THE CORRECT AND SAFE USE.

REPOSE® CARE-SIT COVER IS ONLY TO BE USED WITH REPOSE® CARE-SIT INFLATABLE INNER SECTION.

FOR FURTHER INSTRUCTIONS AND INFORMATION, SEE PUMP.

REPLACE IF PRODUCT IS DAMAGED OR THREADBARE.